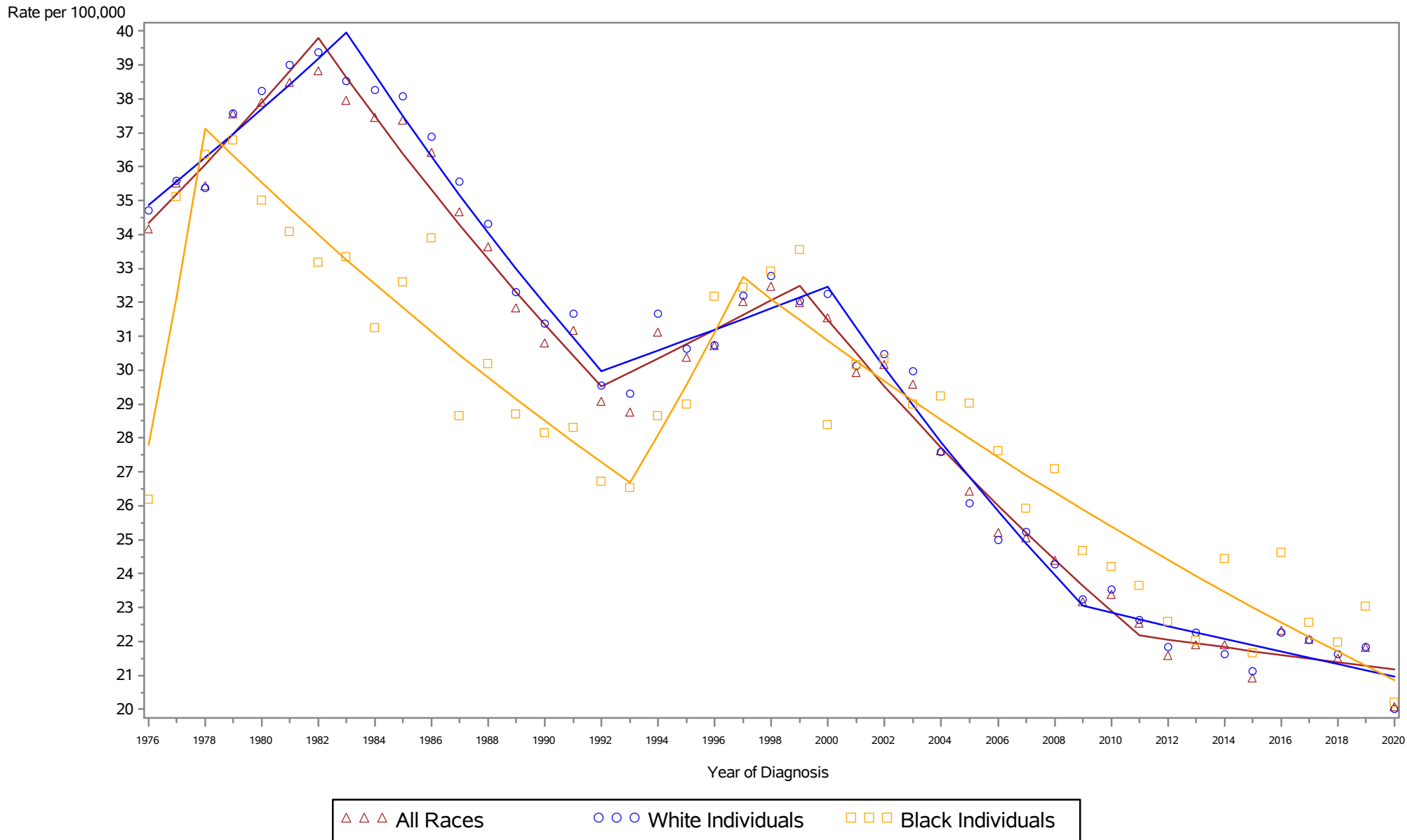


New York State Cancer Registry, NYSDOH  
Age-Adjusted Regional/Distant Stage Cancer Incidence Rates  
New York State by Race, 1976-2020

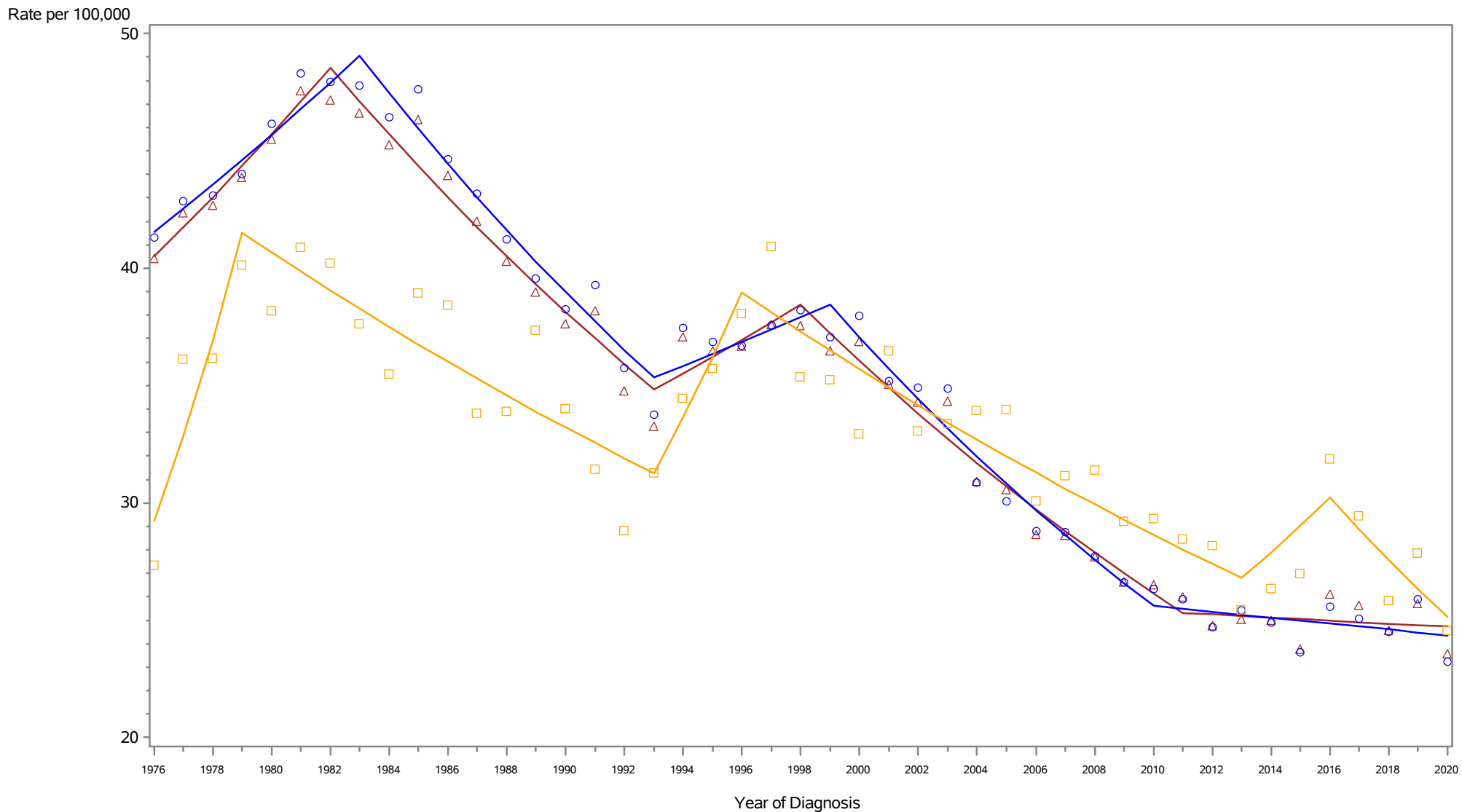
Colorectal, Males and Females



Rates are age-adjusted to the 2000 US population standard. Cancer diagnoses trends in 2020 may have been affected by the coronavirus disease 19 (COVID-19) pandemic. Regression lines are calculated using the Joinpoint Regression Program Version 4.6.0.0, April 2018, National Cancer Institute (<https://surveillance.cancer.gov/joinpoint>). The data shown here are not identical to the data in the corresponding 2016-2020 incidence table. See the rationale in 'Considerations When Comparing Cancer Statistics Over Time.'

New York State Cancer Registry, NYSDOH  
 Age-Adjusted Regional/Distant Stage Cancer Incidence Rates  
 New York State by Race, 1976-2020

Colorectal, Males

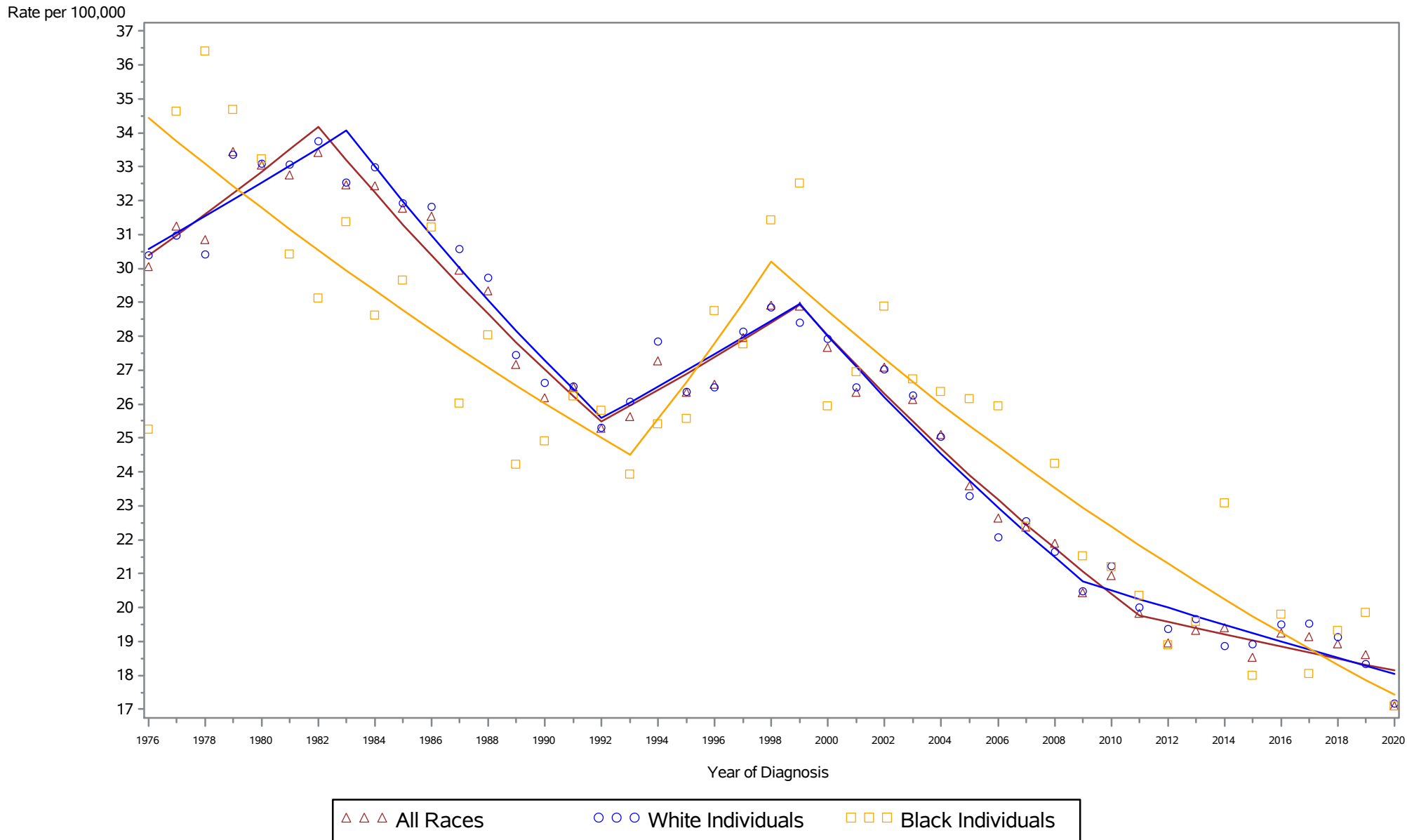


△ △ △ All Races      ○ ○ ○ White Individuals      □ □ □ Black Individuals

Rates are age-adjusted to the 2000 US population standard. Cancer diagnoses trends in 2020 may have been affected by the coronavirus disease 19 (COVID-19) pandemic. Regression lines are calculated using the Joinpoint Regression Program Version 4.6.0.0, April 2018, National Cancer Institute (<https://surveillance.cancer.gov/joinpoint>). The data shown here are not identical to the data in the corresponding 2016-2020 incidence table. See the rationale in 'Considerations When Comparing Cancer Statistics Over Time.'

New York State Cancer Registry, NYSDOH  
 Age-Adjusted Regional/Distant Stage Cancer Incidence Rates  
 New York State by Race, 1976-2020

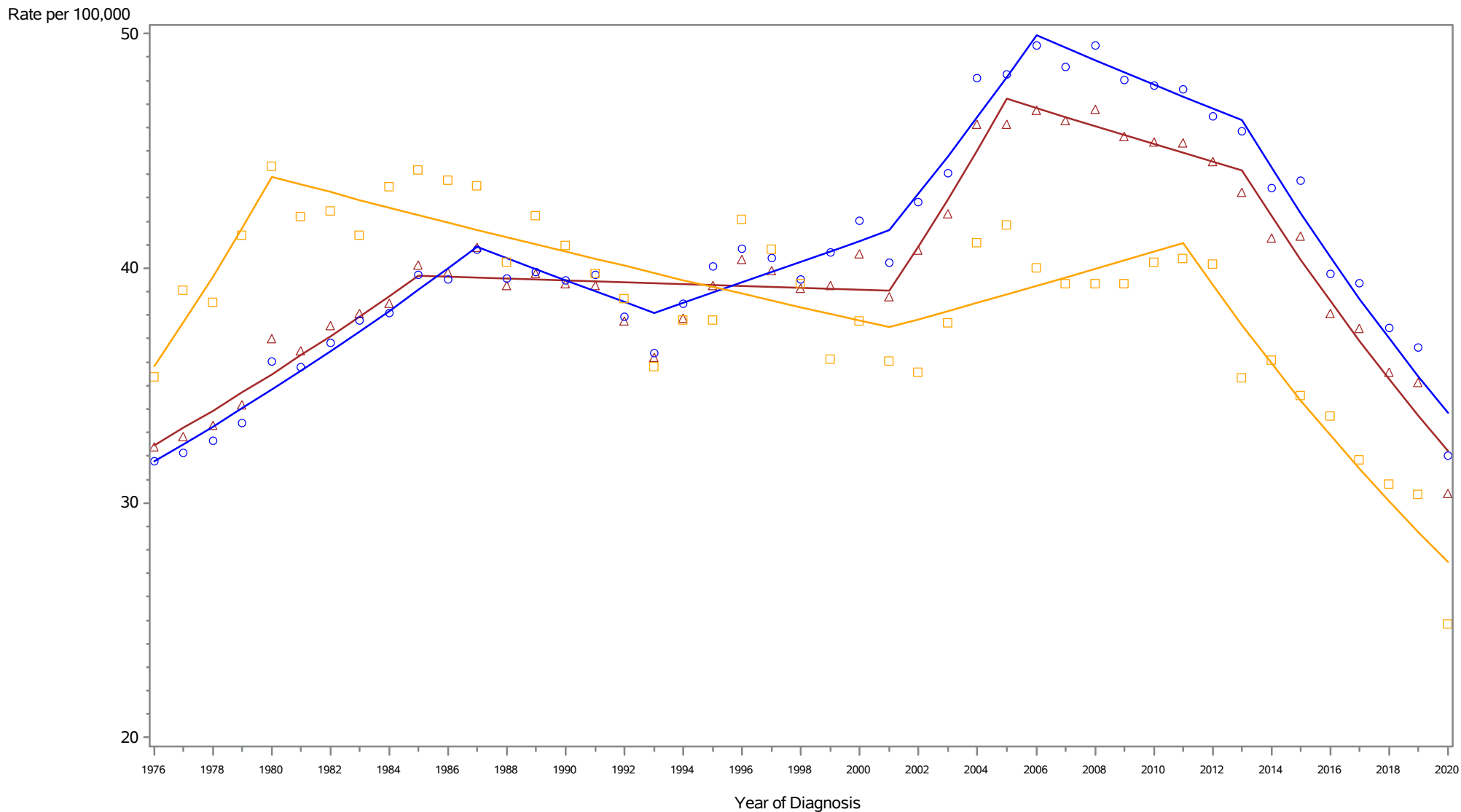
Colorectal, Females



Rates are age-adjusted to the 2000 US population standard. Cancer diagnoses trends in 2020 may have been affected by the coronavirus disease 19 (COVID-19) pandemic. Regression lines are calculated using the Joinpoint Regression Program Version 4.6.0.0, April 2018, National Cancer Institute (<https://surveillance.cancer.gov/joinpoint>). The data shown here are not identical to the data in the corresponding 2016-2020 incidence table. See the rationale in 'Considerations When Comparing Cancer Statistics Over Time.'

New York State Cancer Registry, NYSDOH  
 Age-Adjusted Regional/Distant Stage Cancer Incidence Rates  
 New York State by Race, 1976-2020

Lung and bronchus, Males and Females

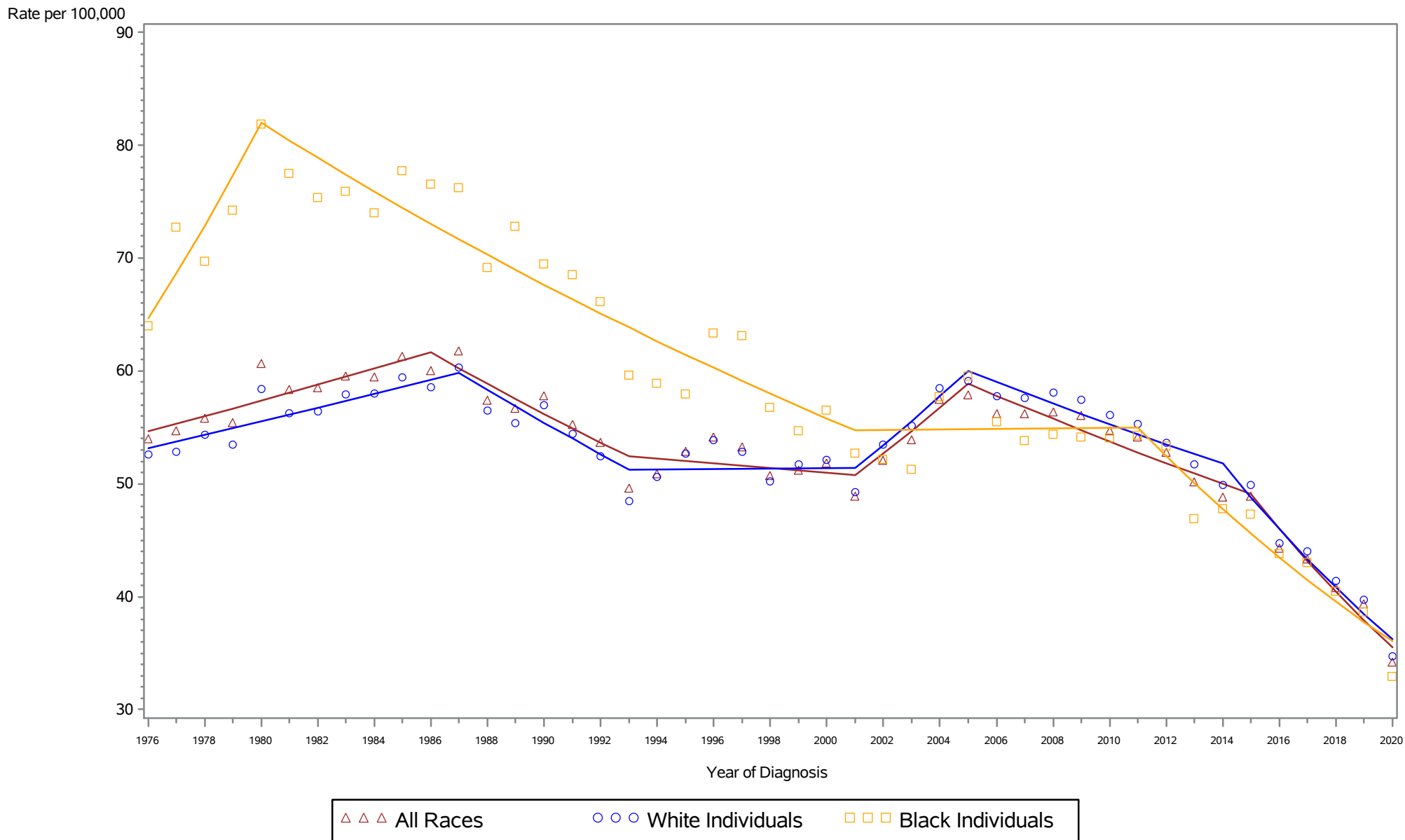


△ △ △ All Races      ○ ○ ○ White Individuals      □ □ □ Black Individuals

Rates are age-adjusted to the 2000 US population standard. Cancer diagnoses trends in 2020 may have been affected by the coronavirus disease 19 (COVID-19) pandemic. Regression lines are calculated using the Joinpoint Regression Program Version 4.6.0.0, April 2018, National Cancer Institute (<https://surveillance.cancer.gov/joinpoint>). The data shown here are not identical to the data in the corresponding 2016-2020 incidence table. See the rationale in 'Considerations When Comparing Cancer Statistics Over Time.'

New York State Cancer Registry, NYSDOH  
Age-Adjusted Regional/Distant Stage Cancer Incidence Rates  
New York State by Race, 1976-2020

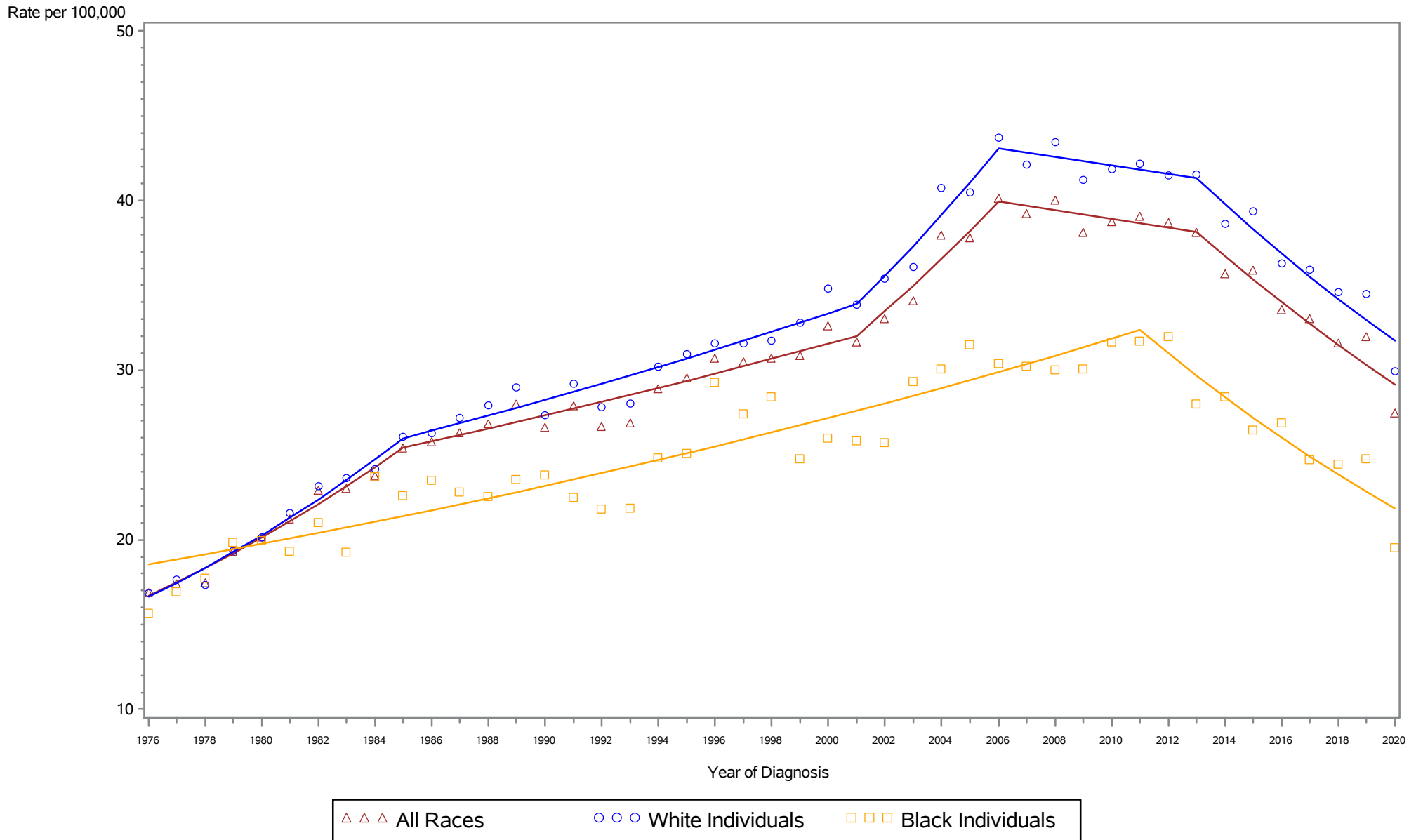
Lung and bronchus, Males



Rates are age-adjusted to the 2000 US population standard. Cancer diagnoses trends in 2020 may have been affected by the coronavirus disease 19 (COVID-19) pandemic. Regression lines are calculated using the Joinpoint Regression Program Version 4.6.0.0, April 2018, National Cancer Institute (<https://surveillance.cancer.gov/joinpoint>). The data shown here are not identical to the data in the corresponding 2016-2020 incidence table. See the rationale in 'Considerations When Comparing Cancer Statistics Over Time.'

New York State Cancer Registry, NYSDOH  
 Age-Adjusted Regional/Distant Stage Cancer Incidence Rates  
 New York State by Race, 1976-2020

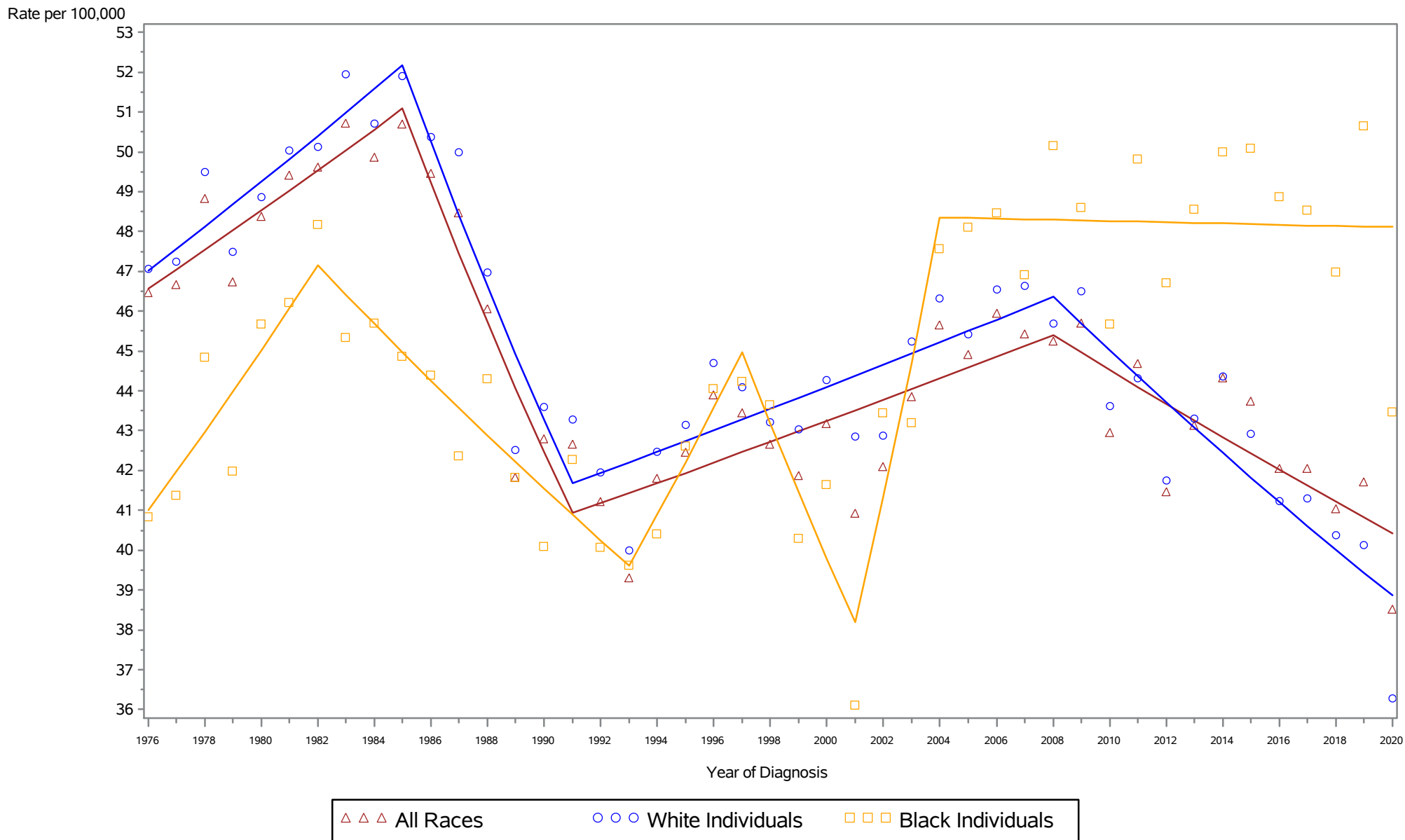
Lung and bronchus, Females



Rates are age-adjusted to the 2000 US population standard. Cancer diagnoses trends in 2020 may have been affected by the coronavirus disease 19 (COVID-19) pandemic. Regression lines are calculated using the Joinpoint Regression Program Version 4.6.0.0, April 2018, National Cancer Institute (<https://surveillance.cancer.gov/joinpoint>). The data shown here are not identical to the data in the corresponding 2016-2020 incidence table. See the rationale in 'Considerations When Comparing Cancer Statistics Over Time.'

New York State Cancer Registry, NYSDOH  
 Age-Adjusted Regional/Distant Stage Cancer Incidence Rates  
 New York State by Race, 1976-2020

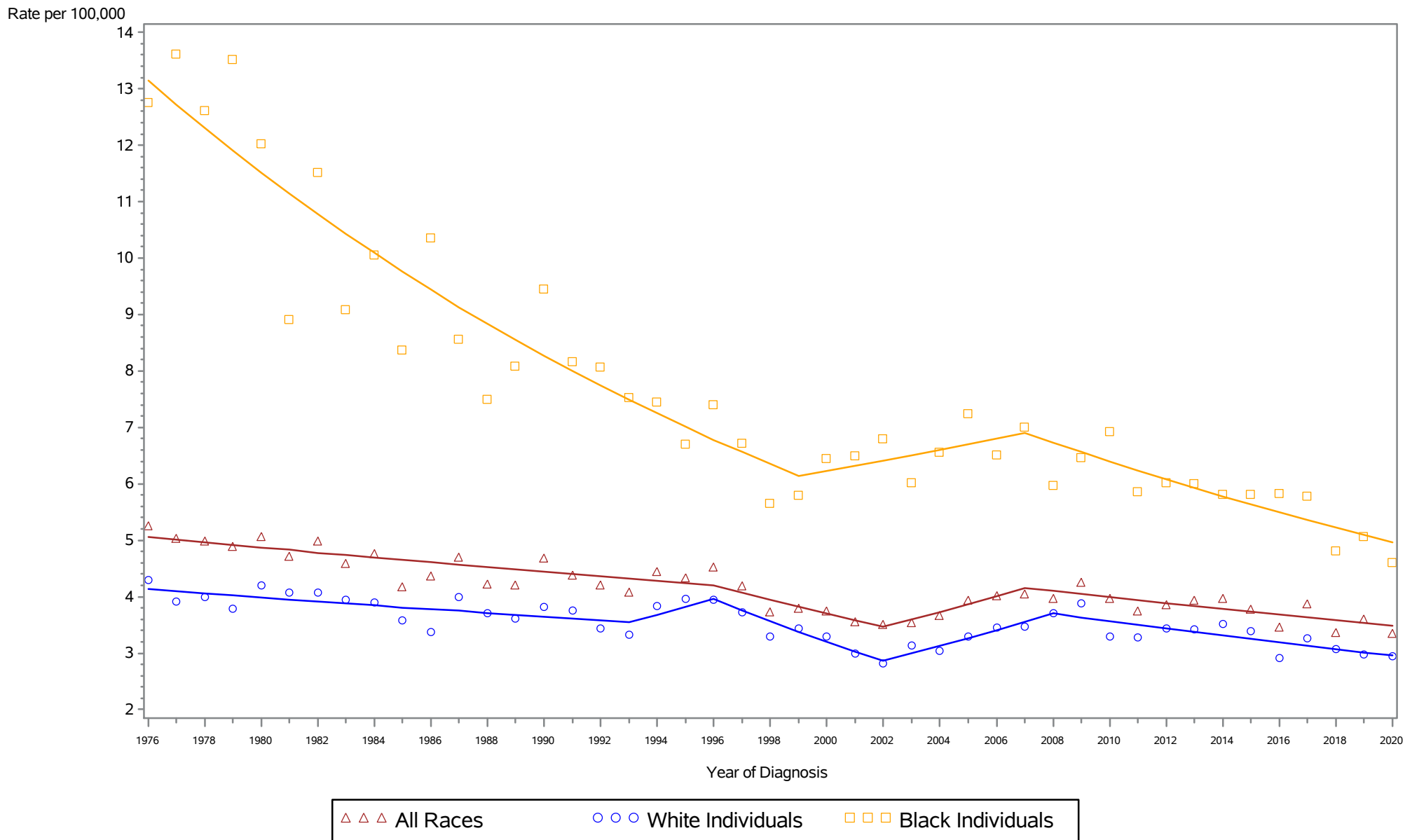
Female breast



Rates are age-adjusted to the 2000 US population standard. Cancer diagnoses trends in 2020 may have been affected by the coronavirus disease 19 (COVID-19) pandemic. Regression lines are calculated using the Joinpoint Regression Program Version 4.6.0.0, April 2018, National Cancer Institute (<https://surveillance.cancer.gov/joinpoint>). The data shown here are not identical to the data in the corresponding 2016-2020 incidence table. See the rationale in 'Considerations When Comparing Cancer Statistics Over Time.'

New York State Cancer Registry, NYSDOH  
 Age-Adjusted Regional/Distant Stage Cancer Incidence Rates  
 New York State by Race, 1976-2020

Cervix uteri

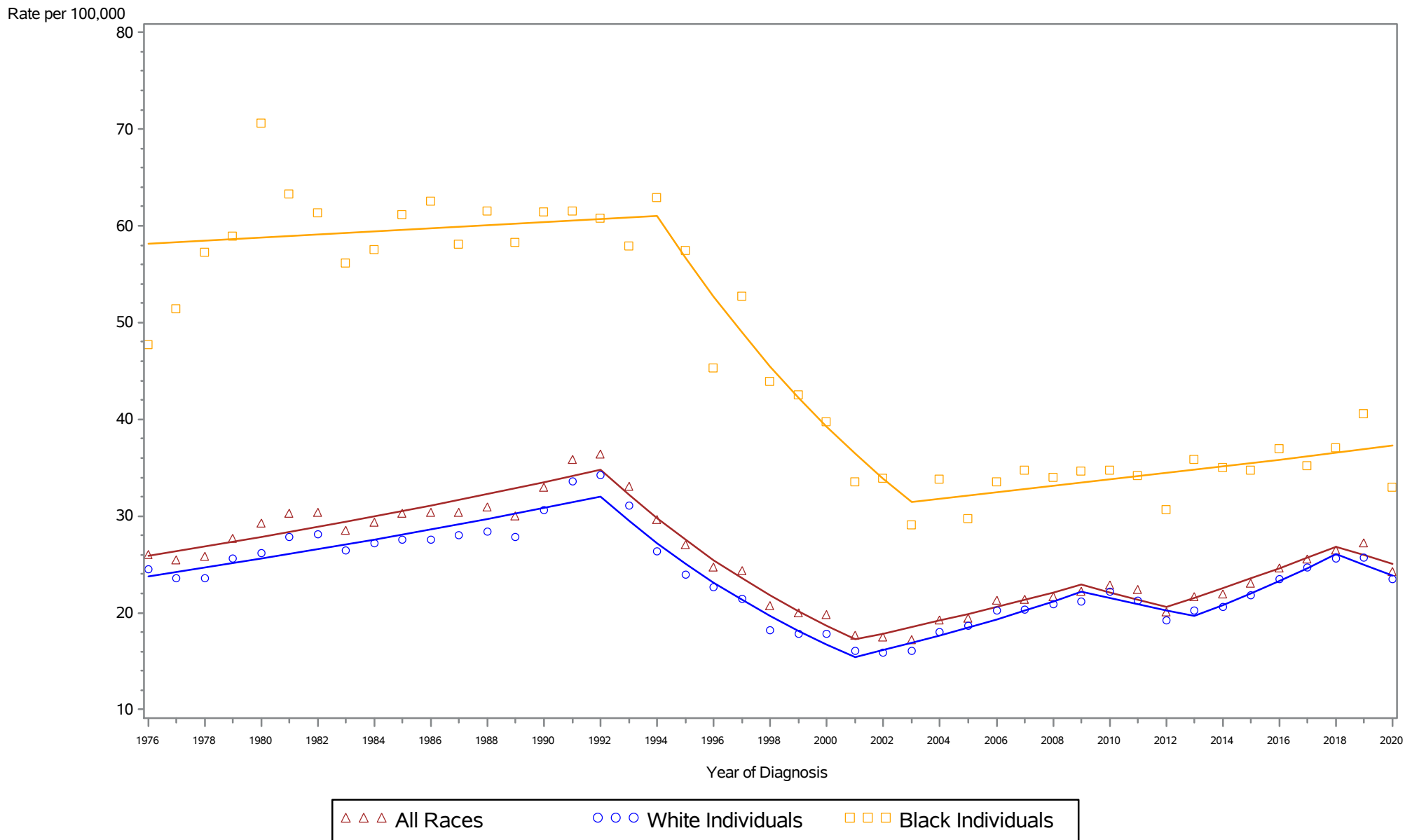


Rates are age-adjusted to the 2000 US population standard. Cancer diagnoses trends in 2020 may have been affected by the coronavirus disease 19 (COVID-19) pandemic. Regression lines are calculated using the Joinpoint Regression Program Version 4.6.0.0, April 2018, National Cancer Institute (<https://surveillance.cancer.gov/joinpoint>). The data shown here are not identical to the data in the corresponding 2016-2020 incidence table. See the rationale in 'Considerations When Comparing Cancer Statistics Over Time.'



New York State Cancer Registry, NYSDOH  
Age-Adjusted Regional/Distant Stage Cancer Incidence Rates  
New York State by Race, 1976-2020

Prostate



Rates are age-adjusted to the 2000 US population standard. Cancer diagnoses trends in 2020 may have been affected by the coronavirus disease 19 (COVID-19) pandemic. Regression lines are calculated using the Joinpoint Regression Program Version 4.6.0.0, April 2018, National Cancer Institute (<https://surveillance.cancer.gov/joinpoint>). The data shown here are not identical to the data in the corresponding 2016-2020 incidence table. See the rationale in 'Considerations When Comparing Cancer Statistics Over Time.'